

## MSDI216 Slip Rings

MSDI216 slip rings are HD-SDI small and compact slip rings, with OD $\Phi$ 22.08mm\*L 28.8mm, standard, off-the-shelf, available in stock.

Specially designed for 1080P video transmitting.

Used RG-179,75 ohms, Frequency rate can reach up to DC-2.3GHz.

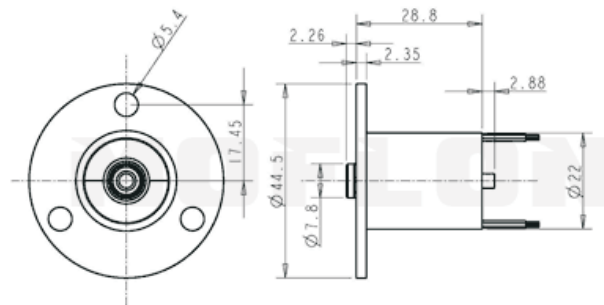


### Specifications

PART #	OD * L	HD-SDI	2A/SIGNAL
MSDI216	$\Phi$ 22.0mm*L 28.8mm	1	16
RF Rotory Joint Specifications			
Frequency rate	DC-2.3GHz	Insertion loss	0.65 dB /1GHz Max
Insertion loss typical	+/-0.05dB	Return loss	-18 dB / 1GHz Max
In put out put	RG -179/U	Max speed	150RPM
Voltage standing wave ratio	VSWR $\leq$ 1.3	wave ratio typical	+/-0.05
Working life	200million revolutions	Connector types	BNC / F
Impedance	75 ohms	Rating Current	DC 1A Max
Electrical Specifications			
Rating voltage	240 VDC/VAC	Contact material	Precious Metal:Gold-Gold
Dielectric strength	600VDC@50Hz	Lead Wire	UL Teflon® Awg28
Insulation resistance	1000M $\Omega$ @500VDC	Lead Lengths	250mm
Operating Temp.	- 40°C to 80°C	Protection	IP51
Mechanical vibratio	MIL-SID-810E	Humidity	10% to 90% RH
Materials	Lead Free,RoHS compliant	CE Certified	YES

### Drawings

Standard drawings:



### Lead wire Color codes

Rings#	Color Code	Rings#	Color Code	Rings#	Color Code
1	BLK	5	YEL	9	GRY
2	BRN	6	GRN	10	WHT
3	RED	7	BLU	11	PINK
4	ORN	8	PURPLE	12	AZURY

### Options

- Specified connectors and Heat-shrink tube.
- Longer lead lengths available.
- Shielded cables
- Connectors

### Application

#### Typical Application

- CCTV Monitoring System.
- Electrical test equipment.
- Medical equipment.
- Rotary table
- Robotics
- Laboratory equipmen
- Manufacturing and process control equipment