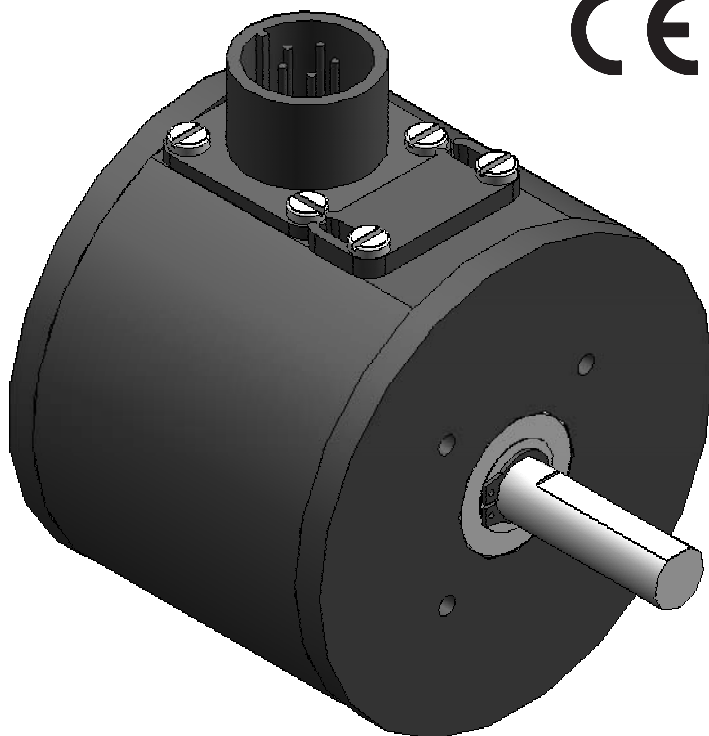


MODEL **RL-P**

INCREMENTAL ENCODER



- Heavy duty bearings
- 3/8", 1/2", 5/8", Metric Shaft Diameters
- Double ended 3/8" shaft option
- Hollow shaft available - Model HRL-P
- Use DIP switches to configure options at installation time
- User selectable pulses per revolution
- User selectable output circuit
- Exclusive "Anti-Jitter" option
- Short-circuit and ESD protection
- 5 vdc, or 8 to 30 vdc supply voltages
- 1, 2, and 3 output models available
- Fully interchangeable with model RL
- Custom models available

Programmable heavy duty face mount

The Photocraft Model RL-P rotary shaft encoder with 3/8", 1/2", 5/8", 8mm, or 10mm diameter shaft was designed for heavy duty applications where a rugged, face mounted encoder is required. When coupled to a rotating shaft, either directly with a flexible coupling or using a timing belt, it converts shaft rotation into square wave outputs.

The number and types of outputs are based on an integrated micro-controller and a factory installed program. Various programs were developed to meet the specific needs of different applications. Many programs offer installation time options that are configured using DIP switches located near the connector.

Call or visit our website for details about currently available programs, and to inquire about new features to meet your specific application needs.

The following are examples of existing program outputs and features:

- User selectable pulses per revolution (ppr)
- User selectable output circuit
- 2 or 3 pulse outputs with differing pulses per revolution
- User selectable quadrature outputs
- Anti-jitter and enhanced anti-jitter features
- Direction indicator
- Minimum speed detector
- Fractional pulses per revolution, such as 2.5 ppr
- Multiplier that increases the maximum ppr