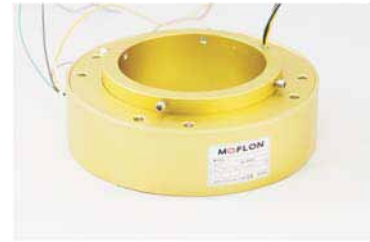


MT180 Series

Through bore 180mm(7.09"), Overall Diameter: 292mm

MT180 series provides a 180mm(7.09") through-bore for routing of hydraulic or pneumatic lines or hydraulic or pneumatic rotating shaft installation, and a 292mm outside diameter, features long life, fiber brush contact technology for ultimate performance in many challenging applications.

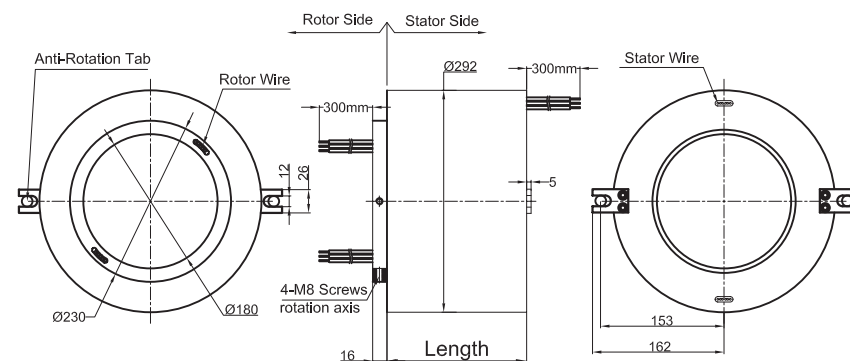


Specifications

Specifications			
Rings	3~72(see table as below)	Current	Signal(2A),10A,Multiple 10A
Voltage	600 VDC/VAC	Max speed	50RPM
Through bore size	180mm(7.09")	Overall diameter	292mm(11.5")
Housing Material	Aluminium Alloy	Torque	1N.m;+0.2N.m/6rings
Working life	depends on speed	Contact material	Precious Metal:Gold-Gold
Electrical noise	<10 mOhm	Contact Resistance	<5 mOhm
Dielectric strength	1000VDC@50Hz	Lead Wire	UL Teflon® Awg22,Awg16
Insulation resistance	1000MΩ@600VDC	Lead Lengths	300mm(12")
Operating Temp.	-40°C to 80°C	Protection	IP51
Mechanical vibratio	MIL-SID-810E	Humidity	10% to 85% RH
Materials	Lead Free,RoHS compliant	Certified	YES

Drawings

Standard drawings:



MT180

Lead wire Color codes

Rings#	Color Code	Rings#	Color Code	Rings#	Color Code
1	BLK	5	YEL	9	GRY
2	BRN	6	GRN	10	WHT
3	RED	7	BLU	11	PINK
4	ORN	8	PURPLE	12	AZURY

12 wires for one group color. from 13 ... 24, repeat the same color as 1 ... 12, indicated with number code pipe.

Parts List

***Please note: 10A rings parallel can be used as multiple 10A current.
For Example: 2 rings parallel could be used as 1 wires 20A**

MT18002 (Length=77mm)					
Parts#	Power 10A	signal/2A	Parts#	Power 10A	signal/2A
MT18002-0200	2	0	MT18002-0002	0	2

MT18003 (Length=83mm)					
Parts#	Power 10A	signal/2A	Parts#	Power 10A	signal/2A
MT18003-0300	3	0	MT18003-0003	0	3
MT18003-0102	1	2	MT18003-0201	2	1

MT18006 (Length=101mm)					
Parts#	Power 10A	signal/2A	Parts#	Power 10A	signal/2A
MT18006-0600	6	0	MT18006-0006	0	6
MT18006-0204	2	4	MT18006-0402	4	2

MT18012 (Length=137mm)					
Parts#	Power 10A	signal/2A	Parts#	Power 10A	signal/2A
MT18012-1200	12	0	MT18012-0012	0	12
MT18012-0210	2	10	MT18012-0408	4	8
MT18012-0606	6	6	MT18012-0804	8	4
MT18012-1002	10	2			

MT18018 (Length=173mm)					
Parts#	Power 10A	signal/2A	Parts#	Power 10A	signal/2A
MT18018-1800	18	0	MT18018-0018	0	18
MT18018-0216	2	16	MT18018-0414	4	14
MT18018-0612	6	12	MT18018-0810	8	10
MT18018-1008	10	8	MT18018-1206	12	6
MT18018-1404	14	4	MT18018-1602	16	2

MT18024 (Length=209mm)					
Parts#	Power 10A	signal/2A	Parts#	Power 10A	signal/2A
MT18024-2400	24	0	MT18024-0024	0	24
MT18024-0618	6	18	MT18024-1212	12	12
MT18024-1806	18	6			

Parts List

***Please note: 10A rings parallel can be used as multiple 10A current.**

For Example: 2 rings parallel could be used as 1 wires 20A

MT18030 (Length=245mm)					
Parts#	Power 10A	signal/2A	Parts#	Power 10A	signal/2A
MT18030-3000	30	0	MT18030-0030	0	30
MT18030-0624	6	24	MT18030-1218	12	18
MT18030-1812	18	12	MT18030-2406	24	6

MT18036 (Length=281mm)					
Parts#	Power 10A	signal/2A	Parts#	Power 10A	signal/2A
MT18036-3600	36	0	MT18036-0036	0	36
MT18036-0630	6	30	MT18036-1224	12	24
MT18036-1818	18	18	MT18036-2412	24	12
MT18036-3006	30	6			

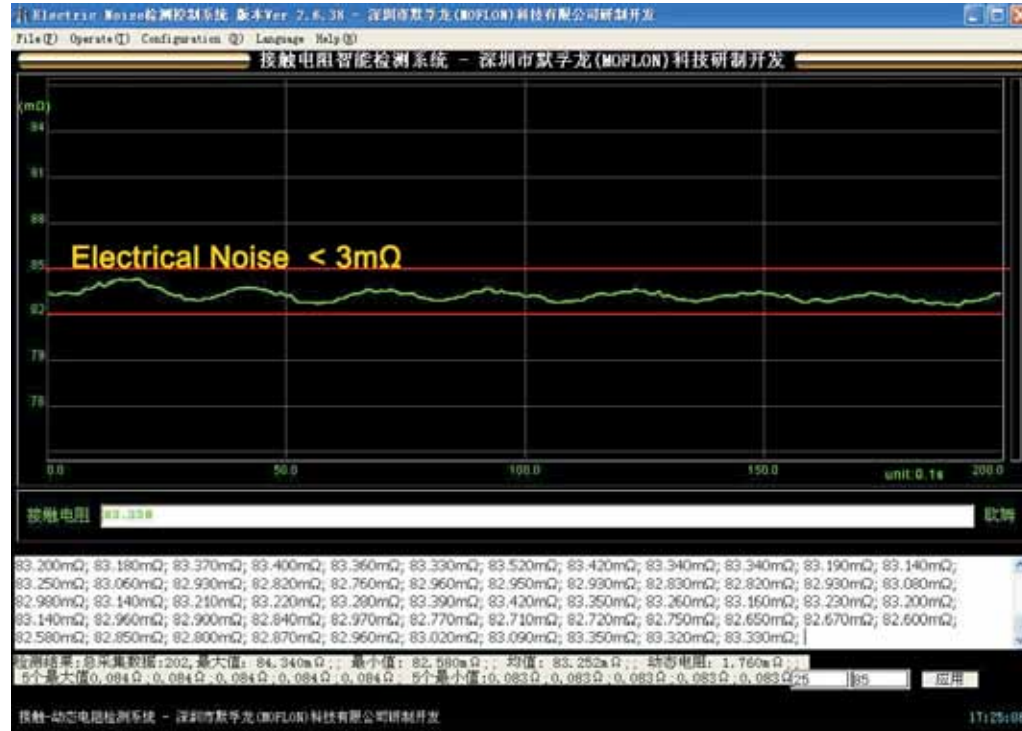
MT18048 (Length=353mm)					
Parts#	Power 10A	signal/2A	Parts#	Power 10A	signal/2A
MT18048-4800	48	0	MT18048-0048	0	48
MT18048-0642	6	42	MT18048-1236	12	36
MT18048-1830	18	30	MT18048-2424	24	24
MT18048-3018	30	18	MT18048-3612	36	12
MT18048-4206	42	6			

MT18056 (Length=401mm)					
Parts#	Power 10A	signal/2A	Parts#	Power 10A	signal/2A
MT18056-5600	56	0	MT18056-0056	0	56
MT18056-0650	6	50	MT18056-1244	12	44
MT18056-1838	18	38	MT18056-2432	24	32
MT18056-3620	36	20	MT18056-4808	48	8

MT18072 (Length=497mm)					
Parts#	Power 10A	signal/2A	Parts#	Power 10A	signal/2A
MT18072-7200	72	0	MT18072-0072	0	72
MT18072-1260	12	60	MT18072-2448	24	48
MT18072-3042	30	42	MT18072-3636	36	36
MT18072-4824	48	24	MT18072-6012	60	12

Electrical Noise Test System

Slip Rings Assembly Work Shop



Working life Test System

