

## MT150 Series

Through bore 150mm(5.91"), Overall Diameter: 248mm

MT150 series provides a 150mm(5.91") through-bore for routing of hydraulic or pneumatic lines or hydraulic or pneumatic rotating shaft installation, and a 248mm outside diameter, features long life, fiber brush contact technology for ultimate performance in many challenging applications.

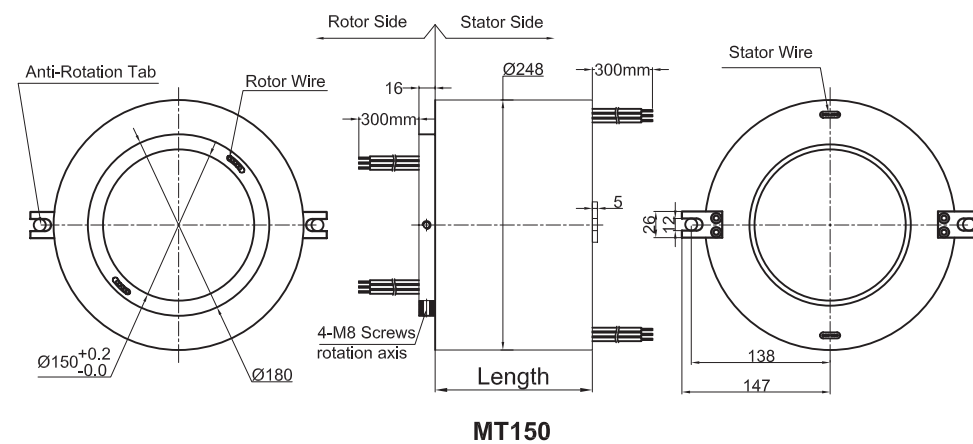


### Specifications

Specifications			
Rings	3~72(see table as below)	Current	Signal(2A),10A,Multiple 10A
Voltage	600 VDC/VAC	Max speed	150RPM
Through bore size	150mm(5.91")	Overall diameter	248mm(9.76")
Housing Material	Aluminium Alloy	Torque	0.5N.m; +0.1N.m/6rings
Working life	depends on speed	Contact material	Precious Metal:Gold-Gold
Electrical noise	<10 mOhm	Contact Resistance	< 5mOhm
Dielectric strength	1000VDC@50Hz	Lead Wire	UL Teflon@ Awg22,Awg16
Insulation resistance	1000MΩ@600VDC	Lead Lengths	300mm(12")
Operating Temp.	-40°C to 80°C	Protection	IP51
Mechanical vibratio	MIL-SID-810E	Humidity	10% to 85% RH
Materials	Lead Free,RoHS compliant	Certified	YES

### Drawings

Standard drawings:



Lead wire Color codes					
Rings#	Color Code	Rings#	Color Code	Rings#	Color Code
1	BLK	5	YEL	9	GRY
2	BRN	6	GRN	10	WHT
3	RED	7	BLU	11	PINK
4	ORN	8	PURPLE	12	AZURY

12 wires for one group color, from 13 ... 24, repeat the same color as 1 ... 12, indicated with number code pipe.

### Parts List

**\*Please note: 10A rings parallel can be used as multiple 10A current.  
For Example: 2 rings parallel could be used as 1 wires 20A**

MT15002 (Length=67mm)					
Parts#	Power 10A	signal/2A	Parts#	Power 10A	signal/2A
MT15002-0200	2	0	MT15002-0002	0	2

MT15003 (Length=73mm)					
Parts#	Power 10A	signal/2A	Parts#	Power 10A	signal/2A
MT15003-0300	3	0	MT15003-0003	0	3
MT15003-0102	1	2	MT15003-0201	2	1

MT15006 (Length=91mm)					
Parts#	Power 10A	signal/2A	Parts#	Power 10A	signal/2A
MT15006-0600	6	0	MT15006-0006	0	6
MT15006-0204	2	4	MT15006-0402	4	2

MT15012 (Length=127mm)					
Parts#	Power 10A	signal/2A	Parts#	Power 10A	signal/2A
MT15012-1200	12	0	MT15012-0012	0	12
MT15012-0210	2	10	MT15012-0408	4	8
MT15012-0606	6	6	MT15012-0804	8	4
MT15012-1002	10	2			

MT15018 (Length=163mm)					
Parts#	Power 10A	signal/2A	Parts#	Power 10A	signal/2A
MT15018-1800	18	0	MT15018-0018	0	18
MT15018-0216	2	16	MT15018-0414	4	14
MT15018-0612	6	12	MT15018-0810	8	10
MT15018-1008	10	8	MT15018-1206	12	6
MT15018-1404	14	4	MT15018-1602	16	2

MT15024 (Length=199mm)					
Parts#	Power 10A	signal/2A	Parts#	Power 10A	signal/2A
MT15024-2400	24	0	MT15024-0024	0	24
MT15024-0618	6	18	MT15024-1212	12	12
MT15024-1806	18	6			

## Parts List

**\*Please note: 10A rings parallel can be used as multiple 10A current.  
For Example: 2 rings parallel could be used as 1 wires 20A**

MT15030 (Length=235mm)					
Parts#	Power 10A	signal/2A	Parts#	Power 10A	signal/2A
MT15030-3000	30	0	MT15030-0030	0	30
MT15030-0624	6	24	MT15030-1218	12	18
MT15030-1812	18	12	MT15030-2406	24	6

MT15036 (Length=271mm)					
Parts#	Power 10A	signal/2A	Parts#	Power 10A	signal/2A
MT15036-3600	36	0	MT15036-0036	0	36
MT15036-0630	6	30	MT15036-1224	12	24
MT15036-1818	18	18	MT15036-2412	24	12
MT15036-3006	30	6			

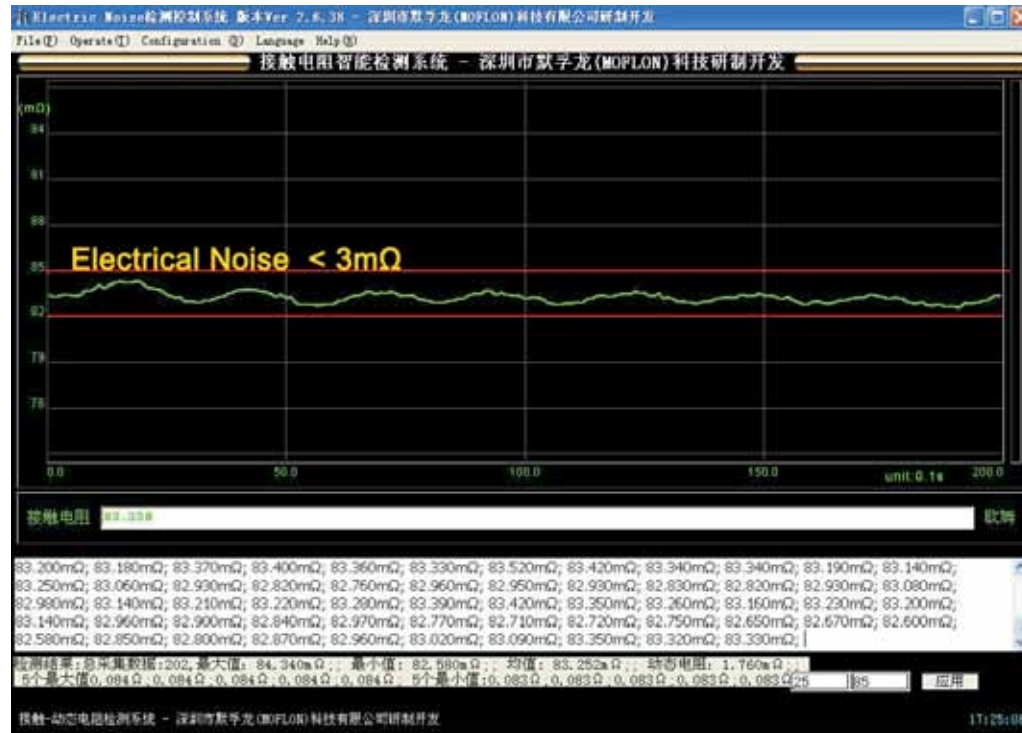
MT15048 (Length=343mm)					
Parts#	Power 10A	signal/2A	Parts#	Power 10A	signal/2A
MT15048-4800	48	0	MT15048-0048	0	48
MT15048-0642	6	42	MT15048-1236	12	36
MT15048-1830	18	30	MT15048-2424	24	24
MT15048-3018	30	18	MT15048-3612	36	12
MT15048-4206	42	6			

MT15056 (Length=391mm)					
Parts#	Power 10A	signal/2A	Parts#	Power 10A	signal/2A
MT15056-5600	56	0	MT15056-0056	0	56
MT15056-0650	6	50	MT15056-1244	12	44
MT15056-1838	18	38	MT15056-2432	24	32
MT15056-3620	36	20	MT15056-4808	48	8

MT15072 (Length=487mm)					
Parts#	Power 10A	signal/2A	Parts#	Power 10A	signal/2A
MT15072-7200	72	0	MT15072-0072	0	72
MT15072-1260	12	60	MT15072-2448	24	48
MT15072-3042	30	42	MT15072-3636	36	36
MT15072-4824	48	24	MT15072-6012	60	12

# Electrical Noise Test System

# Slip Rings Assembly Work Shop



# Working life Test System

