

## MT080 Series

**Through bore 80mm(3.15"), Overall Diameter: 158mm**

MT080 series provides a 80mm(3.15") through-bore for routing of hydraulic or pneumatic lines or hydraulic or pneumatic rotating shaft installation, and a compact 158mm outside diameter, features long life, fiber brush contact technology for ultimate performance in many challenging applications.

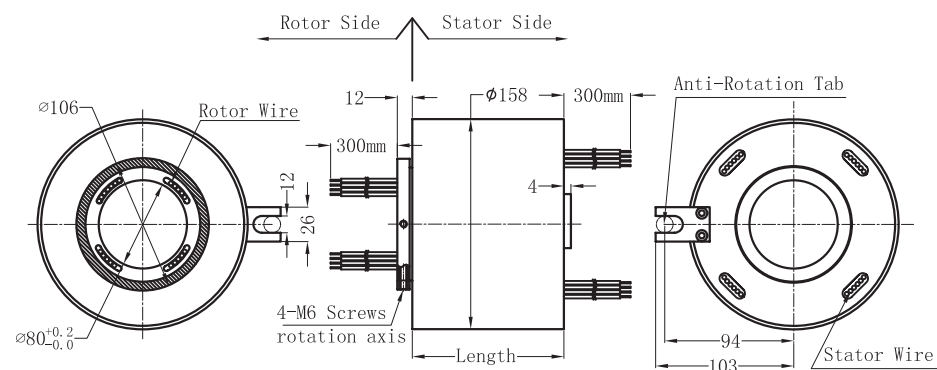


### Specifications

Rings	3~96(see table as below)	Current	Signal(2A),10A
Voltage	600 VDC/VAC	Max speed	500RPM
Through bore size	80mm(3.15")	Overall diameter	158mm(6.22")
Housing Material	Aluminium Alloy	Torque	0.1N.m;+0.03N.m/6rings
Working life	Depends on speed	Contact material	Precious Metal:Gold-Gold
Electrical noise	<10 mOhm	Contact Resistance	<2 mOhm
Dielectric strength	1000VDC@50Hz	Lead Wire	UL Teflon® Awg22,Awg16
Insulation resistance	1000MΩ@600VDC	Lead Lengths	300mm(12")
Operating Temp.	-40°C to 80°C	Protection	IP51
Mechanical vibratio	MIL-SID-810E	Humidity	10% to 85% RH
Materials	Lead Free,RoHS compliant	Certified	YES

### Drawings

Standard drawings:



### MT080

#### Lead wire Color codes

Rings#	Color Code	Rings#	Color Code	Rings#	Color Code
1	BLK	5	YEL	9	GRY
2	BRN	6	GRN	10	WHT
3	RED	7	BLU	11	PINK
4	ORN	8	PURPLE	12	AZURY

12 wires for one group color. from 13 ... 24, repeat the same color as 1 ... 12, indicated with number code pipe.

### Parts List

**\*Please note: 10A rings parallel can be used as multiple 10A current.  
For Example: 2 rings parallel could be used as 1 wires 20A**

MT08002 (Length=41.5mm)					
Parts#	Power 10A	signal/2A	Parts#	Power 10A	signal/2A
MT08002-0200	2	0	MT08002-0002	0	2

MT08003 (Length=45mm)					
Parts#	Power 10A	signal/2A	Parts#	Power 10A	signal/2A
MT08003-0300	3	0	MT08003-0003	0	3
MT08003-0102	1	2	MT08003-0201	2	1

MT08006 (Length=56mm)					
Parts#	Power 10A	signal/2A	Parts#	Power 10A	signal/2A
MT08006-0600	6	0	MT08006-0006	0	6
MT08006-0204	2	4	MT08006-0402	4	2

MT08012 (Length=77.5mm)					
Parts#	Power 10A	signal/2A	Parts#	Power 10A	signal/2A
MT08012-1200	12	0	MT08012-0012	0	12
MT08012-0210	2	10	MT08012-0408	4	8
MT08012-0606	6	6	MT08012-0804	8	4
MT08012-1002	10	2			

MT08018 (Length=99mm)					
Parts#	Power 10A	signal/2A	Parts#	Power 10A	signal/2A
MT08018-1800	18	0	MT08018-0018	0	18
MT08018-0216	2	16	MT08018-0414	4	14
MT08018-0612	6	12	MT08018-0810	8	10
MT08018-1008	10	8	MT08018-1206	12	6
MT08018-1404	14	4	MT08018-1602	16	2

MT08024 (Length=120.8mm)					
Parts#	Power 10A	signal/2A	Parts#	Power 10A	signal/2A
MT08024-2400	24	0	MT08024-0024	0	24
MT08024-0618	6	18	MT08024-1212	12	12
MT08024-1806	18	6			

## Parts List

MT08030 (Length=142.5mm)					
Parts#	Power 10A	signal/2A	Parts#	Power 10A	signal/2A
MT08030-3000	30	0	MT08030-0030	0	30
MT08030-0624	6	24	MT08030-1218	12	18
MT08030-1812	18	12	MT08030-2406	24	6

MT08036 (Length=164mm)					
Parts#	Power 10A	signal/2A	Parts#	Power 10A	signal/2A
MT08036-3600	36	0	MT08036-0036	0	36
MT08036-0630	6	30	MT08036-1224	12	24
MT08036-1818	18	18	MT08036-2412	24	12
MT08036-3006	30	6			

MT08042 (Length=185.5mm)					
Parts#	Power 10A	signal/2A	Parts#	Power 10A	signal/2A
MT08042-4200	42	0	MT08042-0042	0	42
MT08042-0636	6	36	MT08042-1230	12	30
MT08042-1824	18	24	MT08042-2418	24	18
MT08042-3012	30	12	MT08042-3606	36	6

MT08048 (Length=207mm)					
Parts#	Power 10A	signal/2A	Parts#	Power 10A	signal/2A
MT08048-4800	48	0	MT08048-0048	0	48
MT08048-0642	6	42	MT08048-1236	12	36
MT08048-1830	18	30	MT08048-2424	24	24
MT08048-3018	30	18	MT08048-3612	36	12
MT08048-4206	42	6			

MT08056 (Length=236mm)					
Parts#	Power 10A	signal/2A	Parts#	Power 10A	signal/2A
MT08056-5600	56	0	MT08056-0056	0	56
MT08056-0650	6	50	MT08056-1244	12	44
MT08056-1838	18	38	MT08056-2432	24	32
MT08056-3620	36	20	MT08056-4808	48	8

MT08072 (Length=293.5mm)					
Parts#	Power 10A	signal/2A	Parts#	Power 10A	signal/2A
MT08072-7200	72	0	MT08072-0072	0	72
MT08072-1260	12	60	MT08072-2448	24	48
MT08072-3042	30	42	MT08072-3636	36	36
MT08072-4824	48	24	MT08072-6012	60	12

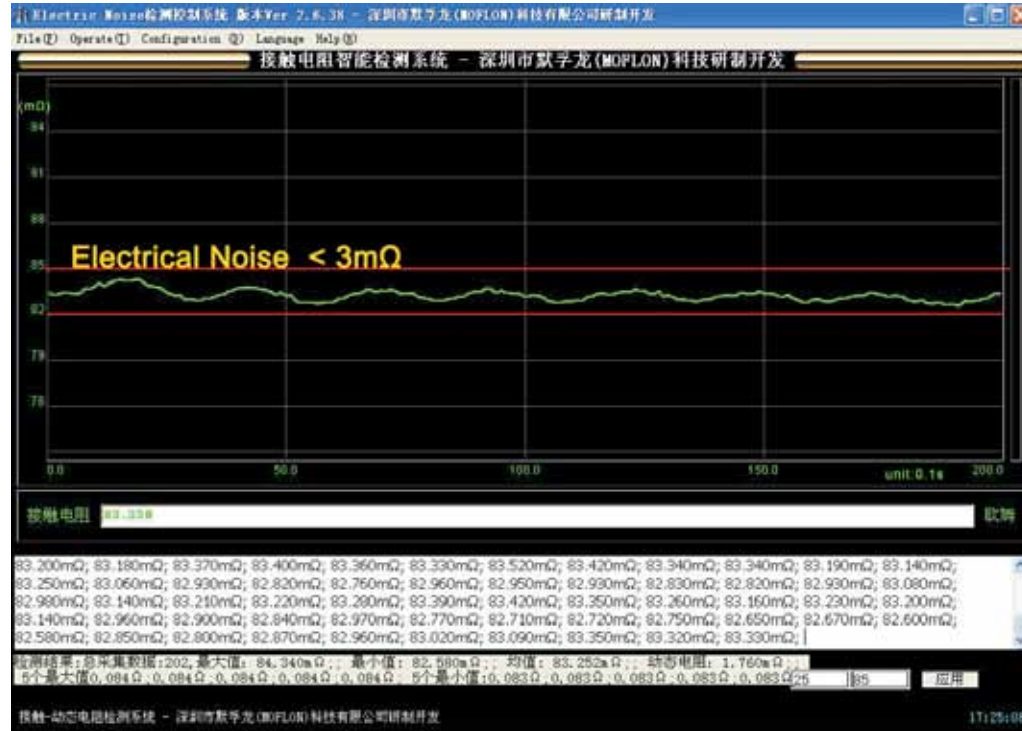
MT08096 (Length=380mm)					
Parts#	Power 10A	signal/2A	Parts#	Power 10A	signal/2A
MT08096-9600	96	0	MT08096-0096	0	96
MT08096-1284	12	84	MT08096-2472	24	72
MT08096-3660	36	60	MT08096-4848	48	48
MT08096-6036	60	36	MT08096-7224	72	24

**\*Please note: 10A rings parallel can be used as multiple 10A current.**

**For Example: 2 rings parallel could be used as 1 wires 20A**

# Electrical Noise Test System

# Slip Rings Assembly Work Shop



# Working life Test System

