

## MT060 Series

**Through bore 60mm(2.36"), Overall Diameter: 130mm (5.12")**



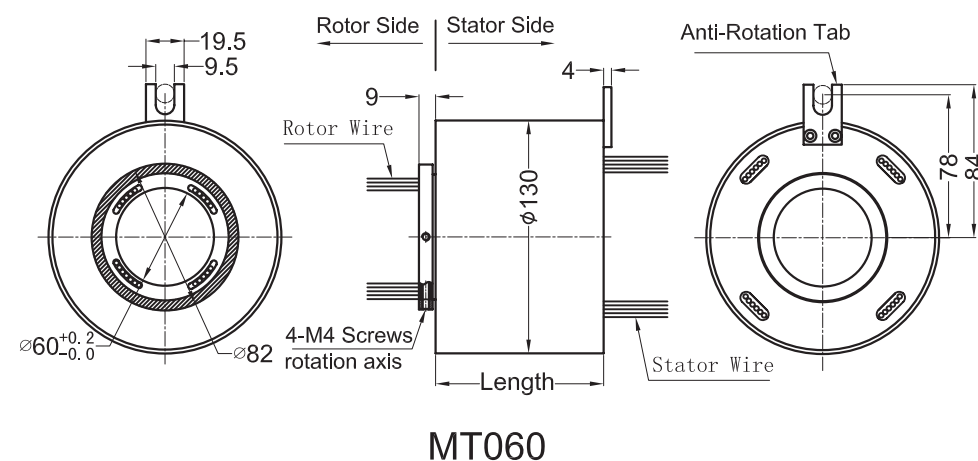
MT060series provides a 60mm(2.36") through-bore for routing of hydraulic or pneumatic lines or hydraulic or pneumatic rotating shaft installation, and a compact 130mm outside diameter, features long life, fiber brush contact technology for ultimate performance in many challenging applications.

### Specifications

Rings	2~96(see table as below)	Current	Signal(2A),10A,Multiple 10A
Voltage	600 VDC/VAC	Max speed	600RPM
Through bore size	60mm(2.36")	Overall diameter	130mm(5.12")
Housing Material	Aluminium Alloy	Torque	0.05N.m; +0.03N.m/6rings
Working life	depends on speed	Contact material	Precious Metal:Gold-Gold
Electrical noise	<10 mOhm	Contact Resistance	< 2 mOhm
Dielectric strength	1000VDC@50Hz	Lead Wire	UL Teflon® Awg22,Awg16
Insulation resistance	1000MΩ@600VDC	Lead Lengths	300mm(12")
Operating Temp.	-40°C to 80°C	Protection	IP51
Mechanical vibratio	MIL-SID-810E	Humidity	10% to 85% RH
Materials	Lead Free,RoHS compliant	Certified	YES

### Drawings

Standard drawings:



### Lead wire Color codes

Rings#	Color Code	Rings#	Color Code	Rings#	Color Code
1	BLK	5	YEL	9	GRY
2	BRN	6	GRN	10	WHT
3	RED	7	BLU	11	PINK
4	ORN	8	PURPLE	12	AZURY

12 wires for one group color. from 13 ... 24, repeat the same color as 1 ... 12, indicated with number code pipe.

### Parts List

**\*Please note: 10A rings parallel can be used as multiple 10A current.**

**For Example: 2 rings parallel could be used as 1 wires 20A**

MT06002 (Length=35.4mm)					
Parts#	Power 10A	signal/2A	Parts#	Power 10A	signal/2A
MT06002-0200	2	0	MT06002-0002	0	2

MT06003 (Length=39.2mm)					
Parts#	Power 10A	signal/2A	Parts#	Power 10A	signal/2A
MT06003-0300	3	0	MT06003-0003	0	3
MT06003-0102	1	2	MT06003-0201	2	1

MT06006 (Length=50mm)					
Parts#	Power 10A	signal/2A	Parts#	Power 10A	signal/2A
MT06006-0600	6	0	MT06006-0006	0	6
MT06006-0204	2	4	MT06006-0402	4	2

MT06012 (Length=71.5mm)					
Parts#	Power 10A	signal/2A	Parts#	Power 10A	signal/2A
MT06012-1200	12	0	MT06012-0012	0	12
MT06012-0210	2	10	MT06012-0408	4	8
MT06012-0606	6	6	MT06012-0804	8	4
MT06012-1002	10	2			

MT06018 (Length=93mm)					
Parts#	Power 10A	signal/2A	Parts#	Power 10A	signal/2A
MT06018-1800	18	0	MT06018-0018	0	18
MT06018-0216	2	16	MT06018-0414	4	14
MT06018-0612	6	12	MT06018-0810	8	10
MT06018-1008	10	8	MT06018-1206	12	6
MT06018-1404	14	4	MT06018-1602	16	2

MT06024 (Length=114.8mm)					
Parts#	Power 10A	signal/2A	Parts#	Power 10A	signal/2A
MT06024-2400	24	0	MT06024-0024	0	24
MT06024-0618	6	18	MT06024-1212	12	12
MT06024-1806	18	6			

## Parts List

MT06030 (Length=136.4mm)					
Parts#	Power 10A	signal/2A	Parts#	Power 10A	signal/2A
MT06030-3000	30	0	MT06030-0030	0	30
MT06030-0624	6	24	MT06030-1218	12	18
MT06030-1812	18	12	MT06030-2406	24	6

MT06036 (Length=158mm)					
Parts#	Power 10A	signal/2A	Parts#	Power 10A	signal/2A
MT06036-3600	36	0	MT06036-0036	0	36
MT06036-0630	6	30	MT06036-1224	12	24
MT06036-1818	18	18	MT06036-2412	24	12
MT06036-3006	30	6			

MT06042 (Length=179.6mm)					
Parts#	Power 10A	signal/2A	Parts#	Power 10A	signal/2A
MT06042-4200	42	0	MT06042-0042	0	42
MT06042-0636	6	36	MT06042-1230	12	30
MT06042-1824	18	24	MT06042-2418	24	18
MT06042-3012	30	12	MT06042-3606	36	6

MT06048 (Length=200mm)					
Parts#	Power 10A	signal/2A	Parts#	Power 10A	signal/2A
MT06048-4800	48	0	MT06048-0048	0	48
MT06048-0642	6	42	MT06048-1236	12	36
MT06048-1830	18	30	MT06048-2424	24	24
MT06048-3018	30	18	MT06048-3612	36	12
MT06048-4206	42	6			

MT06056 (Length=230mm)					
Parts#	Power 10A	signal/2A	Parts#	Power 10A	signal/2A
MT06056-5600	56	0	MT06056-0056	0	56
MT06056-0650	6	50	MT06056-1244	12	44
MT06056-1838	18	38	MT06056-2432	24	32
MT06056-3620	36	20	MT06056-4808	48	8

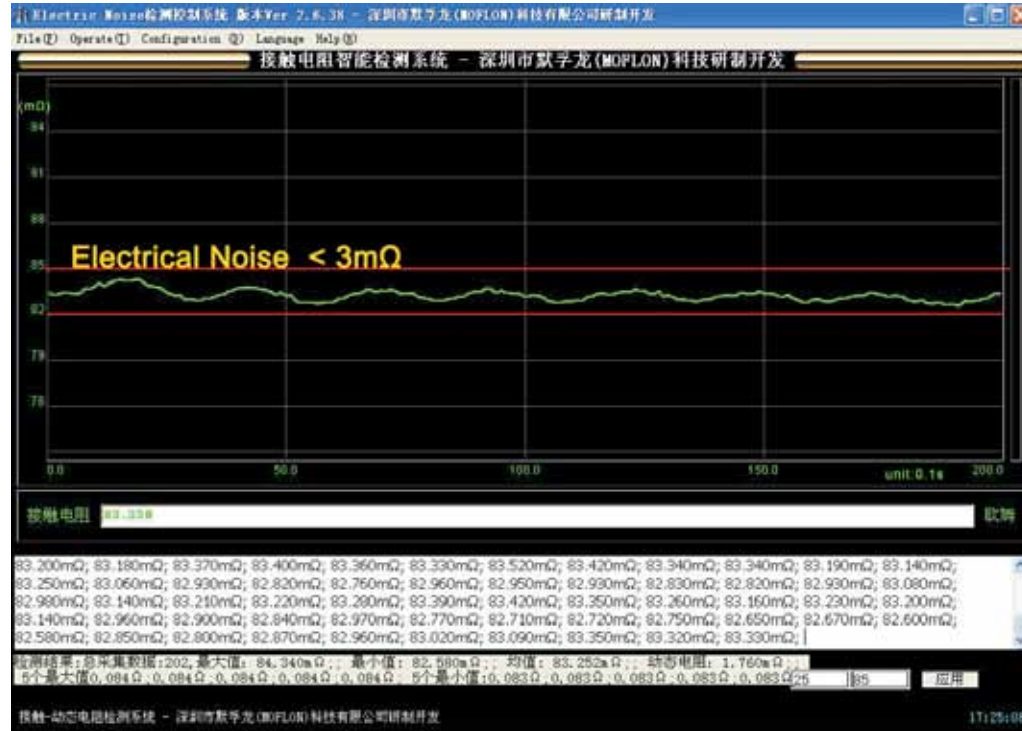
MT06072 (Length=287.5mm)					
Parts#	Power 10A	signal/2A	Parts#	Power 10A	signal/2A
MT06072-7200	72	0	MT06072-0072	0	72
MT06072-1260	12	60	MT06072-2448	24	48
MT06072-3042	30	42	MT06072-3636	36	36
MT06072-4824	48	24	MT06072-6012	60	12

MT06096 (Length=374mm)					
Parts#	Power 10A	signal/2A	Parts#	Power 10A	signal/2A
MT06096-9600	96	0	MT06096-0096	0	96
MT06096-1284	12	84	MT06096-2472	24	72
MT06096-3660	36	60	MT06096-4848	48	48
MT06096-6036	60	36	MT06096-7224	72	24

**\*Please note: 10A rings parallel can be used as multiple 10A current.  
For Example: 2 rings parallel could be used as 1 wires 20A**

# Electrical Noise Test System

# Slip Rings Assembly Work Shop



# Working life Test System

