

## MT038 Series

**Through bore 38.10mm(1.5"), Overall Diameter: 99mm (3.9")**

Mt038series provides a 38.10mm(1.5") through-bore for routing of hydraulic or pneumatic lines or hydraulic or pneumatic rotating shaft installation, and a compact 99mm outside diameter, features long life, fiber brush contact technology for ultimate performance in many challenging applications.

MT038 series are standard, off-the-shelf products, Color-coded lead wires are used on both the stator and rotor for simplified electrical connections. It can transmit signal(2A), 10A current at max 600VAC/VDC



### Specifications

Rings	2~96(see next page)	Current	Signal(2A),10A
Voltage	600 VDC/VAC	Max speed	1000RPM
Through bore size	38.1mm(1.5")	Overall diameter	99mm(3.9")
Housing Material	Aluminium Alloy	Torque	0.05N.m;+0.03N.m/6rings
Working life	Depends on speed	Contact material	Precious Metal:Gold-Gold
Electrical noise	<5 mOhm	Contact Resistance	<2mOhm
Dielectric strength	800VDC@50Hz	Lead Wire	UL Teflon® Awg22,Awg16
Insulation resistance	1000MΩ@600VDC	Lead Lengths	300mm(12")
Operating Temp.	-40°C to 80°C	Protection	IP51
Mechanical vibratio	MIL-SID-810E	Humidity	10% to 85% RH
Materials	Lead Free,RoHS compliant	Certified	YES

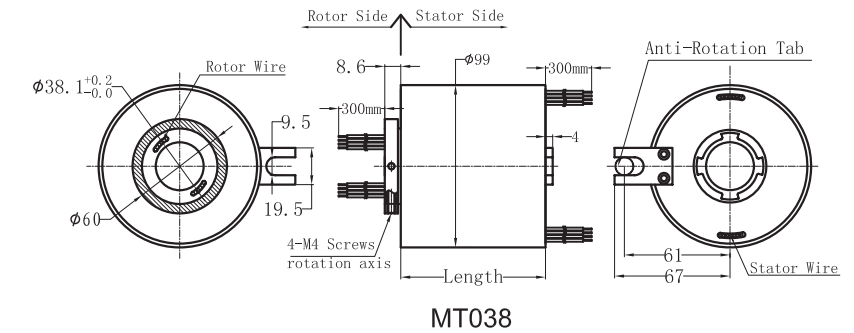
### Lead wire Color codes

Rings#	Color Code	Rings#	Color Code	Rings#	Color Code
1	BLK	5	YEL	9	GRY
2	BRN	6	GRN	10	WHT
3	RED	7	BLU	11	PINK
4	ORN	8	PURPLE	12	AZURY

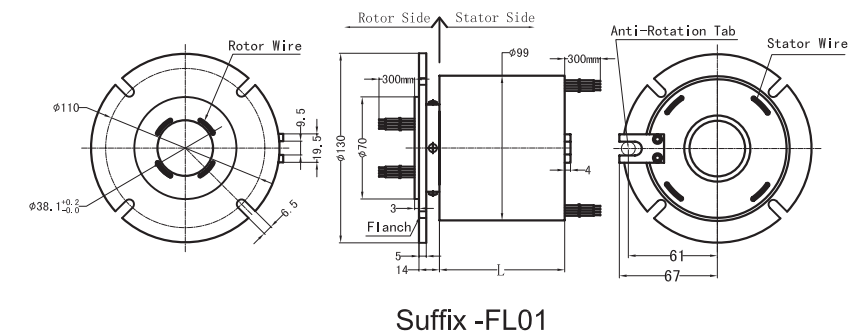
12 wires for one group color. from 13 ... 24, repeat the same color as 1 ... 12, indicated with number code pipe.

## Drawings

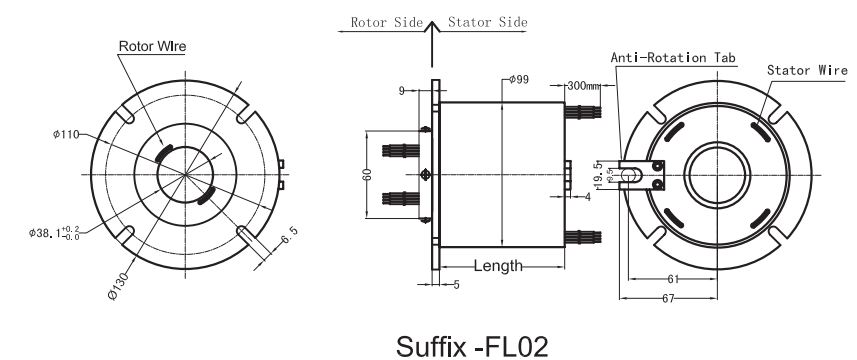
### Standard drawings:



### Optional FI01 Rotor Flanges drawings:



### Optional FI02 Stator Flanges drawings:



## MT038 - MT SERIES

## MT038 - MT SERIES

## Parts List

**\*Please note: 10A rings parallel can be used as multiple 10A current.  
For Example: 2 rings parallel could be used as 1 wires 20A**

MT03802 (Length=31.6mm)					
Parts#	Power 10A	signal/2A	Parts#	Power 10A	signal/2A
MT03802-0200	2	0	MT03802-0002	0	2

MT03803 (Length=35mm)					
Parts#	Power 10A	signal/2A	Parts#	Power 10A	signal/2A
MT03803-0300	3	0	MT03803-0003	0	3
MT03803-0102	1	2	MT03803-0201	2	1

MT03806 (Length=45mm)					
Parts#	Power 10A	signal/2A	Parts#	Power 10A	signal/2A
MT03806-0600	6	0	MT03806-0006	0	6
MT03806-0204	2	4	MT03806-0402	4	2

MT03812(Length=65.5mm)					
Parts#	Power 10A	signal/2A	Parts#	Power 10A	signal/2A
MT03812-1200	12	0	MT03812-0012	0	12
MT03812-0210	2	10	MT03812-0408	4	8
MT03812-0606	6	6	MT03812-0804	8	4
MT03812-1002	10	2			

MT03818 (Length=86mm)					
Parts#	Power 10A	signal/2A	Parts#	Power 10A	signal/2A
MT03818-1800	18	0	MT03818-0018	0	18
MT03818-0216	2	16	MT03818-0414	4	14
MT03818-0612	6	12	MT03818-0810	8	10
MT03818-1008	10	8	MT03818-1206	12	6
MT03818-1404	14	4	MT03818-1602	16	2

MT03824(Length=106.4mm)					
Parts#	Power 10A	signal/2A	Parts#	Power 10A	signal/2A
MT03824-2400	24	0	MT03824-0024	0	24
MT03824-0618	6	18	MT03824-1212	12	12
MT03824-1806	18	6			

MT03830 (Length=126mm)					
Parts#	Power 10A	signal/2A	Parts#	Power 10A	signal/2A
MT03830-3000	30	0	MT03830-0030	0	30
MT03830-0624	6	24	MT03830-1218	12	18
MT03830-1812	18	12	MT03830-2406	24	6

MT03836 (Length=147mm)					
Parts#	Power 10A	signal/2A	Parts#	Power 10A	signal/2A
MT03836-3600	36	0	MT03836-0036	0	36
MT03836-0630	6	30	MT03836-1224	12	24
MT03836-1818	18	18	MT03836-2412	24	12
MT03836-3006	30	6			

MT03842 (Length=167.6mm)					
Parts#	Power 10A	signal/2A	Parts#	Power 10A	signal/2A
MT03842-4200	42	0	MT03842-0042	0	42
MT03842-0636	6	36	MT03842-1230	12	30
MT03842-1824	18	24	MT03842-2418	24	18
MT03842-3012	30	12	MT03842-3606	36	6

MT03848 (Length=188mm)					
Parts#	Power 10A	signal/2A	Parts#	Power 10A	signal/2A
MT03848-4800	48	0	MT03848-0048	0	48
MT03848-0642	6	42	MT03848-1236	12	36
MT03848-1830	18	30	MT03848-2424	24	24
MT03848-3018	30	18	MT03848-3612	36	12
MT03848-4206	42	6			

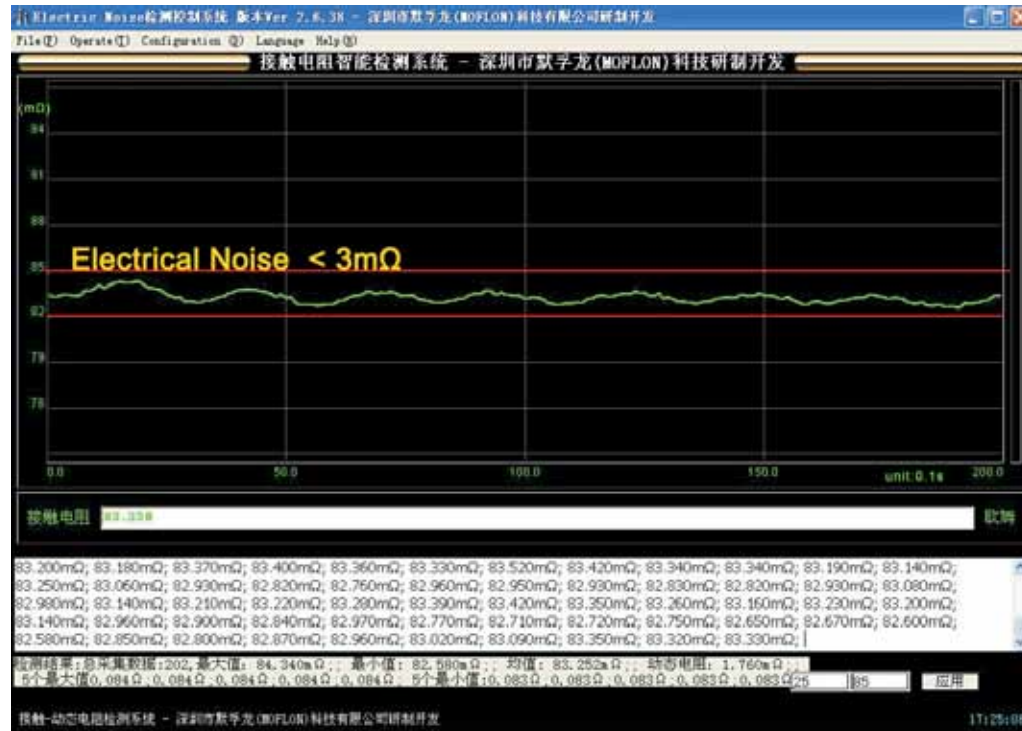
MT03856 (Length=215mm)					
Parts#	Power 10A	signal/2A	Parts#	Power 10A	signal/2A
MT03856-5600	56	0	MT03856-0056	0	56
MT03856-0650	6	50	MT03856-1244	12	44
MT03856-1838	18	38	MT03856-2432	24	32
MT03856-3620	36	20	MT03856-4808	48	8

MT03872(Length=269.6mm)					
Parts#	Power 10A	signal/2A	Parts#	Power 10A	signal/2A
MT03872-7200	72	0	MT03872-0072	0	72
MT03872-1260	12	60	MT03872-2448	24	48
MT03872-3042	30	42	MT03872-3636	36	36
MT03872-4824	48	24	MT03872-6012	60	12

MT03896(Length=351mm)					
Parts#	Power 10A	signal/2A	Parts#	Power 10A	signal/2A
MT03896-9600	96	0	MT03896-0096	0	96
MT03896-1284	12	84	MT03896-2472	24	72
MT03896-3660	36	60	MT03896-4848	48	48
MT03896-6036	60	36	MT03896-7224	72	24

# Electrical Noise Test System

# Slip Rings Assembly Work Shop



# Working life Test System

