

MT030 Series

Through bore 30.00mm(1.18"), Overall Diameter: 99mm (3.9")

Mt030series provides a 30.00mm(1.18") through-bore for routing of hydraulic or pneumatic lines or hydraulic or pneumatic rotating shaft installation, and a compact 99mm outside diameter, features long life, fiber brush contact technology for ultimate performance in many challenging applications.

MT030 series are standard, off-the-shelf products, Color-coded lead wires are used on both the stator and rotor for simplified electrical connections. It can transmit signal(2A), 10A current at max 600VAC/VDC



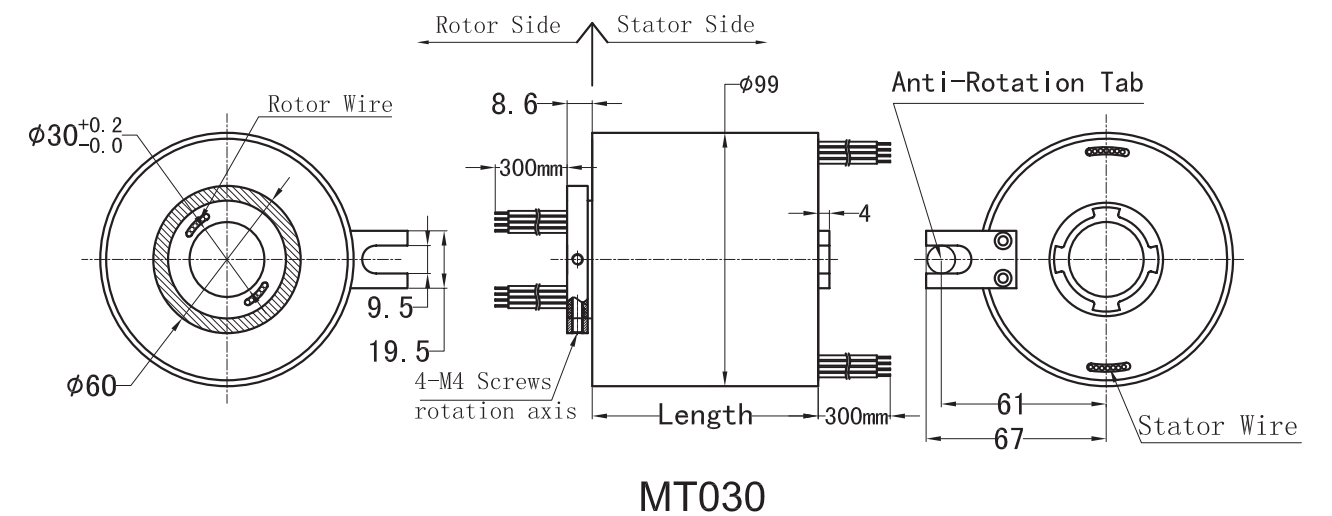
Specifications			
Rings	2~96(see next page)	Current	Signal(2A),10A
Voltage	600 VDC/VAC	Max speed	1000RPM
Through bore size	30mm(1.18")	Overall diameter	99mm(3.9")
Housing Material	Aluminium Alloy	Torque	0.05N.m;+0.03N.m/6rings
Working life	depends on speed	Contact material	Precious Metal:Gold-Gold
Electrical noise	<5 mOhm	Contact Resistance	<2 mOhm
Dielectric strength	800VDC@50Hz	Lead Wire	UL Teflon® Awg22,Awg16
Insulation resistance	1000MΩ@600VDC	Lead Lengths	300mm(12")
Operating Temp.	-40°C to 80°C	Protection	IP51
Mechanical vibratio	MIL-SID-810E	Humidity	10% to 85% RH
Materials	Lead Free,RoHS compliant	Certified	YES

Lead wire Color codes					
Rings#	Color Code	Rings#	Color Code	Rings#	Color Code
1	BLK	5	YEL	9	GRY
2	BRN	6	GRN	10	WHT
3	RED	7	BLU	11	PINK
4	ORN	8	PURPLE	12	AZURY

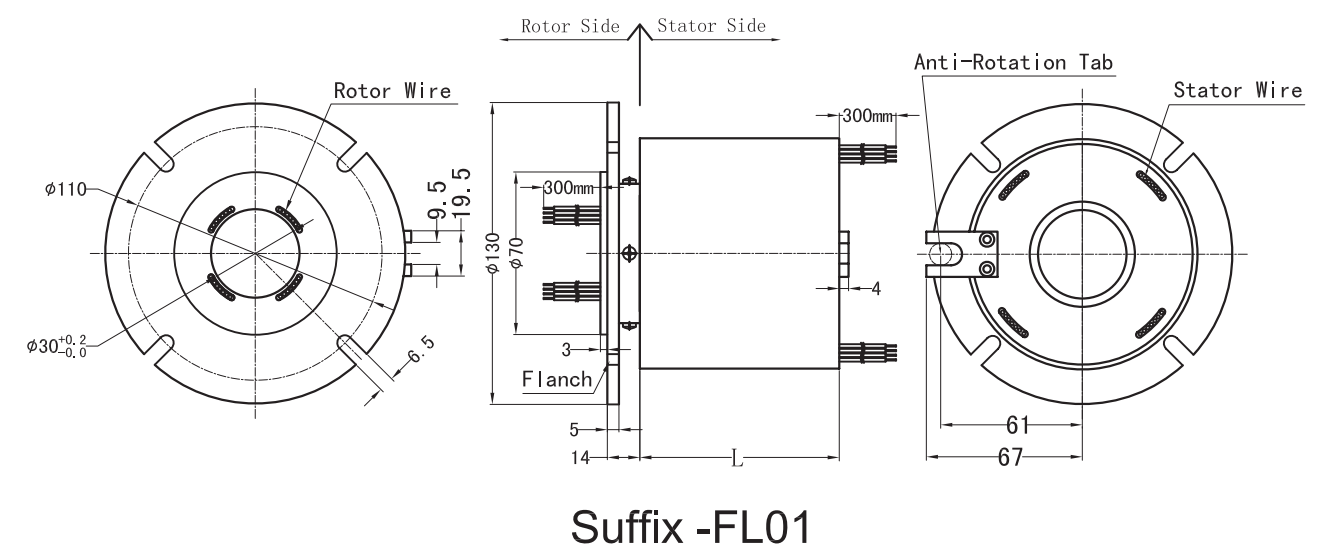
12 wires for one group color. from 13 ... 24, repeat the same color as 1 ... 12, indicated with number code pipe.

Drawings

Standard drawings:



Optional Flanges drawings:



MT030 - MT SERIES

MT030 - MT SERIES

Parts List

***Please note: 10A rings parallel can be used as multiple 10A current.
For Example: 2 rings parallel could be used as 1 wires 20A**

MT03002 (Length=31.6mm)					
Parts#	Power 10A	signal/2A	Parts#	Power 10A	signal/2A
MT03002-0200	2	0	MT03002-0002	0	2

MT03003 (Length=35mm)					
Parts#	Power 10A	signal/2A	Parts#	Power 10A	signal/2A
MT03003-0300	3	0	MT03003-0003	0	3
MT03003-0102	1	2	MT03003-0201	2	1

MT03006 (Length=45mm)					
Parts#	Power 10A	signal/2A	Parts#	Power 10A	signal/2A
MT03006-0600	6	0	MT03006-0006	0	6
MT03006-0204	2	4	MT03006-0402	4	2

MT03012(Length=65.5mm)					
Parts#	Power 10A	signal/2A	Parts#	Power 10A	signal/2A
MT03012-1200	12	0	MT03012-0012	0	12
MT03012-0210	2	10	MT03012-0408	4	8
MT03012-0606	6	6	MT03012-0804	8	4
MT03012-1002	10	2			

MT03018 (Length=86mm)					
Parts#	Power 10A	signal/2A	Parts#	Power 10A	signal/2A
MT03018-1800	18	0	MT03018-0018	0	18
MT03018-0216	2	16	MT03018-0414	4	14
MT03018-0612	6	12	MT03018-0810	8	10
MT03018-1008	10	8	MT03018-1206	12	6
MT03018-1404	14	4	MT03018-1602	16	2

MT03024(Length=106.4mm)					
Parts#	Power 10A	signal/2A	Parts#	Power 10A	signal/2A
MT03024-2400	24	0	MT03024-0024	0	24
MT03024-0618	6	18	MT03024-1212	12	12
MT03024-1806	18	6			

MT03030(Length=126.8mm)					
Parts#	Power 10A	signal/2A	Parts#	Power 10A	signal/2A
MT03030-3000	30	0	MT03030-0030	0	30
MT03030-0624	6	24	MT03030-1218	12	18
MT03030-1812	18	12	MT03030-2406	24	6

MT03036 (Length=147mm)					
Parts#	Power 10A	signal/2A	Parts#	Power 10A	signal/2A
MT03036-3600	36	0	MT03036-0036	0	36
MT03036-0630	6	30	MT03036-1224	12	24
MT03036-1818	18	18	MT03036-2412	24	12
MT03036-3006	30	6			

MT03042 (Length=167.6mm)					
Parts#	Power 10A	signal/2A	Parts#	Power 10A	signal/2A
MT03042-4200	42	0	MT03042-0042	0	42
MT03042-0636	6	36	MT03042-1230	12	30
MT03042-1824	18	24	MT03042-2418	24	18
MT03042-3012	30	12	MT03042-3606	36	6

MT03048 (Length=188mm)					
Parts#	Power 10A	signal/2A	Parts#	Power 10A	signal/2A
MT03048-4800	48	0	MT03048-0048	0	48
MT03048-0642	6	42	MT03048-1236	12	36
MT03048-1830	18	30	MT03048-2424	24	24
MT03048-3018	30	18	MT03048-3612	36	12
MT03048-4206	42	6			

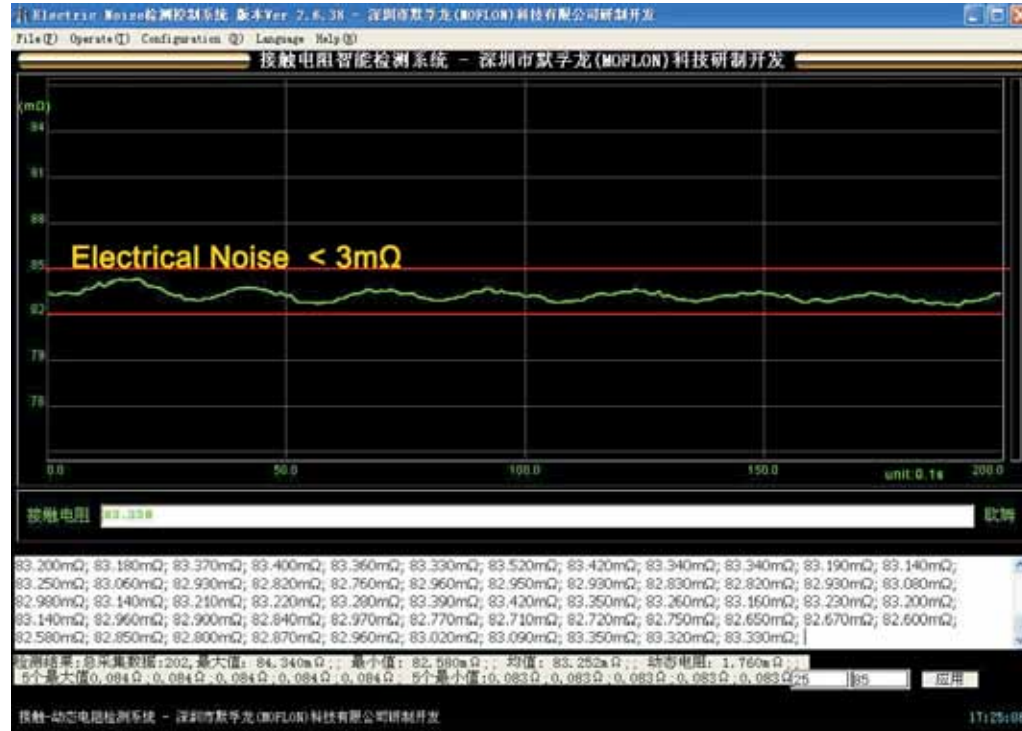
MT03056 (Length=215mm)					
Parts#	Power 10A	signal/2A	Parts#	Power 10A	signal/2A
MT03056-5600	56	0	MT03056-0056	0	56
MT03056-0650	6	50	MT03056-1244	12	44
MT03056-1838	18	38	MT03056-2432	24	32
MT03056-3620	36	20	MT03056-4808	48	8

MT03072(Length=269.6mm)					
Parts#	Power 10A	signal/2A	Parts#	Power 10A	signal/2A
MT03072-7200	72	0	MT03072-0072	0	72
MT03072-1260	12	60	MT03072-2448	24	48
MT03072-3042	30	42	MT03072-3636	36	36
MT03072-4824	48	24	MT03072-6012	60	12

MT03096 (Length=351mm)					
Parts#	Power 10A	signal/2A	Parts#	Power 10A	signal/2A
MT03096-9600	96	0	MT03096-0096	0	96
MT03096-1284	12	84	MT03096-2472	24	72
MT03096-3660	36	60	MT03096-4848	48	48
MT03096-6036	60	36	MT03096-7224	72	

Electrical Noise Test System

Slip Rings Assembly Work Shop



Working life Test System

