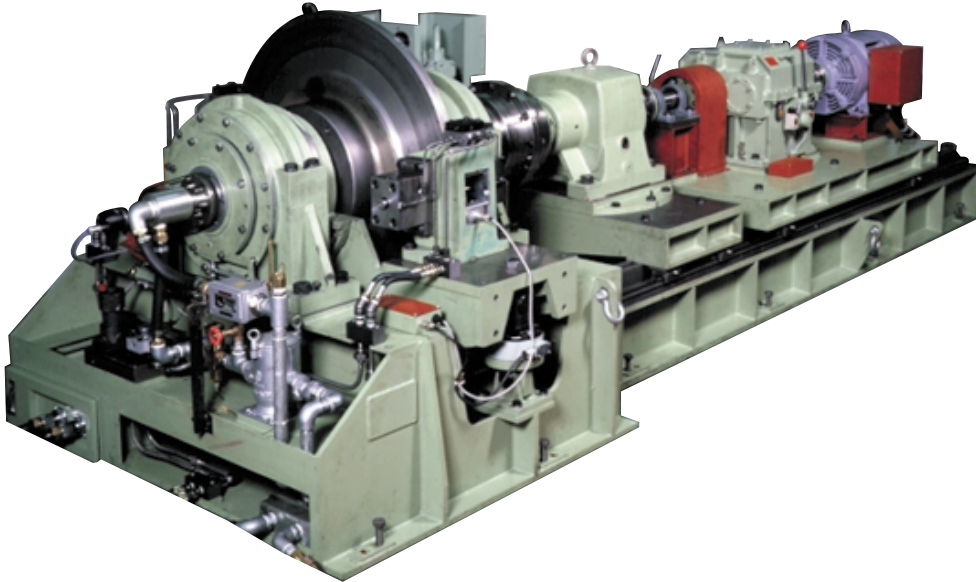


Load Testor



General

While generally used Electric Dynamometer and Water Dynamometer are high speed low torque type, Sanyo Load Testor is low speed high torque type dynamometer. Structure of Load Testor is as follow. Pneumatic or Hydraulic Disc Brake would give load mechanically to the Water Cooling Disc mounted at the Input Shaft by nipping the disc and produced reaction force is detected by the Load Cell and will be converted to torque value.

Application

- ① Noise Test and Efficiency Test for Speed Reducer.
- ② Travelling Test for Agricultural Equipment and Construction Machine.
- ③ Destructive Test for Universal Shaft.
- ④ Efficiency Test for Fluid Coupling.
- ⑤ Endurance Test for various equipment.

Features

- ① Easy Load Test of low rotation speed.
- ② Easy Load Test of high torque.
- ③ Stall Test of Fluid Coupling is available.
- ④ Optional load torque setting is available.

Control Panel

- ① Standard Control Panel for Load Testor is arranged.
- ② Load Controller which correct load torque fluctuation and control it to stable load torque to be arranged by option.
- ③ Special designed Measuring Panel and Control Panel by customers' request in accordance with control function and measuring function are available.



*Dimensions and specifications might be changed for improvement without notice.