

Sensor for Detecting Sliver Breakage

FC5-71

Preventing the malfunctions by temporary slack

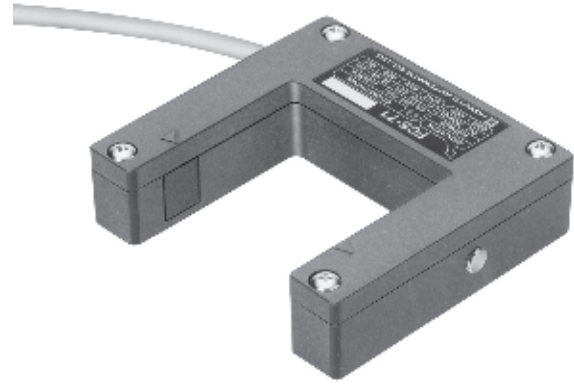
This is U-shape sensor which is consisting of projector, receiver and amplifier in one body. This is mounted in the entrance of the coiler and detects coiler blockage or sliver breakage.

Easy handling.

Speical timer for preveining malfunctions by temporary slack is incorporated.

Relay output(1a relay).

Comapatible with FC5-61.



Specifications

Type	Through-beam type
Model	FC5-71
Power source	12 to 24V AC(± 10%, 50/ 60H z)
Power consumption	1V A or less(at 12VAC), 3V A or less(at 24VAC)
Light source	Infrared LED
Distance between projector & receiver	50mm(fixed)
Detectable objects	Sliver with ρ 10mm or more(opaque objects)
Response time	Executed after 5sec(interrupting state) and 1sec(light-entering state)
Operating mode	Light-ON *
Control output	1a relay(125VAC 0.5A co s ρ= 1), single-shot output for 1sec .
Indication lamp	RDY lam p
Connection	Pull-out cord type (0.3m m ² Cabtire cord of 3.5m provided)
Ambient illuminance	10,000lux or less(incandescent lamp)
Ambient temperature/humidity	-10 to +50 , 45 to 85%RH or less
Protective structure	IP52(IEC Standard)
Case	PBT resin
Weight	Approx. 200g

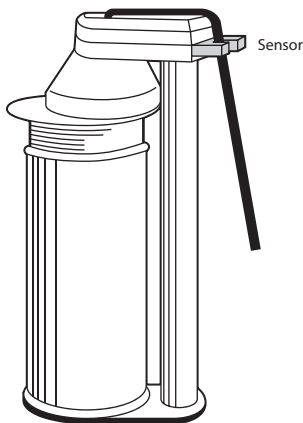
* After the beam is interrupted completely by sliver for 5sec., i

f completely is for 1sec or more, it operates.

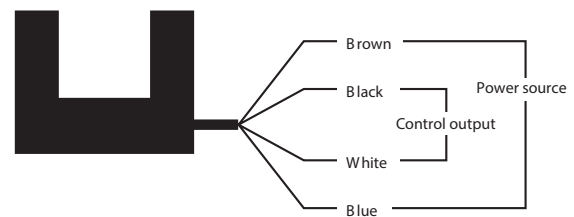
Application

Coiler blockage/ Sliver breakage

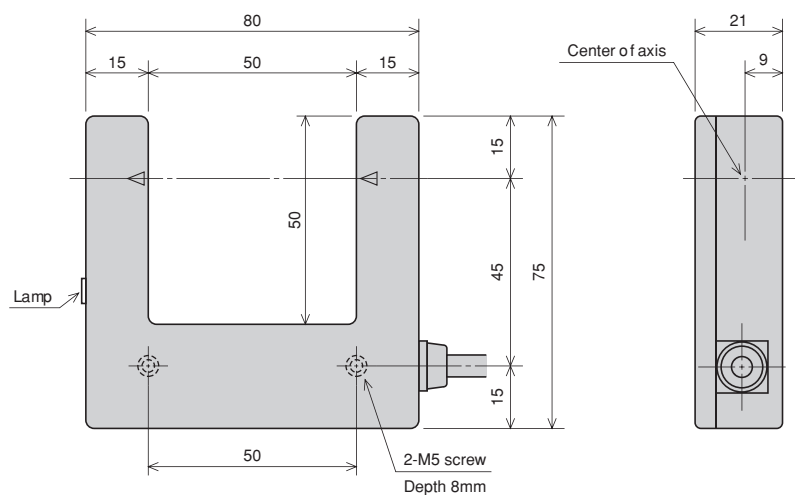
This sensor detects coiler blockage and sliver breakage.



Connection



■ External dimensions



■ Attention

- Make sure to make a single wiring basically because if making a wiring with power line etc., it may be affected by noise.
- If extending the cable, use cable with 0.3mm^2 or more and length should be 100m or less.
- If using commercial switching regulator as power source, make sure to earth FG (frame ground terminal) and G (ground terminal).