

User Information

English translation

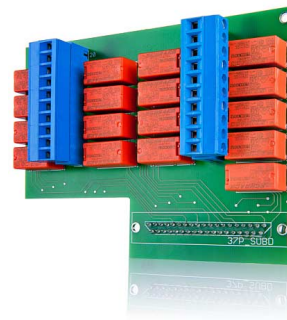
Correct Use

These cards serve as a power amplification for the outputs of the PLCs EPR16, EPR16S. The PLC EPC16 has already an internal power transistor output and therefore can only be equipped with the relay output card EPR16-RE.

Relay-Output Card EPR16-RE

The output card **EPR16-RE** possesses 16 digital relay outputs for the devices EPR16, EPC16 and EPR16S. The Watch Dog output is available as relay contact too. All relay contacts are protection-wired with 250V-varistors.

There are two contact blocks with a common connection in each for output 1..8 with Watch Dog as well as for output 9..16. Both blocks are electrically isolated and can be operated therefore with different voltages.

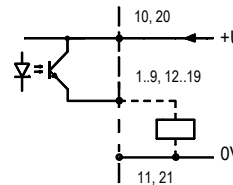
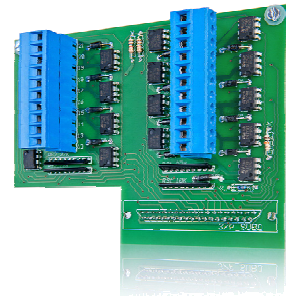


Features

Power Transistor Output Card EPR16-OK

The output card **EPR16-OK** possesses 16 electronic outputs for the devices EPR16, EPC16 and EPR16S. The Watch Dog output is available as 0.5A-transistor output. All outputs are electrically isolated, durable short-circuit proof and temperature rise-protected. There are one or two contact blocks with a common connection in each for output 1..8 with Watch Dog as well as for output 9..16.

Everyone of the short circuit proof transistor switching outputs switches a maximum permanent current of 0.5A. In the short-circuit or case of temperature rise the output is switched off. Restarting is effected automatically after falling below that overload. At the ports +U and 0V an external DC voltage 10-30V is necessary. The load is connected between output (A1..A16) and 0V.



Transistor Outputs EPR16-OK

Installation

The card is mounted simply on the OUTPUT plug-connection of the EPR16/EPC16/EPR16S and fixed with the enclosed screws. The voltage supply of the relays is available from the EPR / EPC. Attached inductances such as single solenoid valves, small contactor etc. must be protection-wired (RC element or varistor).

Electrical Connection

The outputs of the screw terminals have to be connected as listed in the adjoining table. Connected inductances such as magnetic valve, mini contactors etc. have to be protected (RC element or varistor).

Terminal	EPR16-RE	EPR16-OK
01	Watch-Dog	Watch-Dog
02	Output 1	Output 1
03	Output 2	Output 2
04	Output 3	Output 3
05	Output 4	Output 4
06	Output 5	Output 5
07	Output 6	Output 6
08	Output 7	Output 7
09	Output 8	Output 8
10	Comm. Conn. 1..8	+U (Input)
11	Output 9	0V (to +U)
12	Output 10	Output 9
13	Output 11	Output 10
14	Output 12	Output 11
15	Output 13	Output 12
16	Output 14	Output 13
17	Output 15	Output 14
18	Output 16	Output 15
19	Comm. Conn 9..16	Output 16
20	Comm. Conn 9..16	+U (Input)
21		0V (to +U)

The signals +U and 0V of both connecting terminals are internally connected.

Safety Precautions



- The installation and operation must be carried out by qualified personnel only,
- The safe function of the device during machine operation cannot be guaranteed in case of wrong connection or improper operation. This may lead to fatal injuries.
- Pay attention to country specific regulations.
- The electrical installation must be performed after disconnecting the device and the machine from the mains supply.
- The wiring must be carried out according to the instructions of this operating manual.

- Opening the device, any manipulation of the device and the avoidance of the safety facilities are not permitted.
- All relevant safety regulations and standards must be attended to.
- Non-observance of the safety regulations may cause death, severe injuries or substantial damage to property.
- Before use, please, read the operating instructions and keep it in a safe place. Make sure that the operating instructions are always available for installation, initial operation and maintenance.

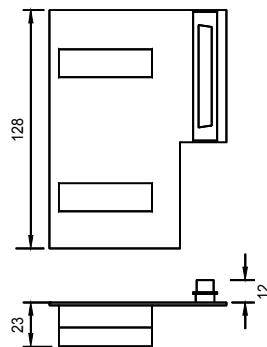
Non-observance of the instructions above will cause the loss of warranty.

User Information

Techn. Data

Outputs	16 N/O
Watch-Dog-Output	1 N/O
Temperature range	0 - +60 ⁰
Weight	approx. 200g
EPR16-RE:	
2 contact blocks each with a common connection	
Contact rating	AC 250V, 3A; DC 24V, 3A
max. sum current for each block	8A
Insulation voltage coil/contact	2.5kV
EPR16-OK:	
16 transistor outputs	
Watch Dog output	1 transistor output
2 contact blocks each with a common connection	
Contact rating	DC 10-30V smoothed, 0.5A
Residual ripple	< 5%
durable short-circuit proof	
Temperature rise disconnection	

Dimension Drawing



zusätzliche Einbautiefe 36mm



Variants

Order No. 585450	EPR16-RE for EPR16(S), EPC16
Order No. 585455	EPR16-OK for EPR16(S)