

Operating Instructions

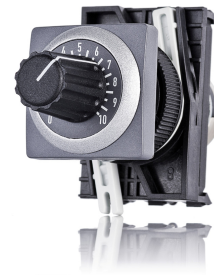
English translation

Correct use

The remote potentiometer DFP can be used in connection with the timers DMC and DVC to adjust time range. DFP is supplied with rotary knob, scale and installation kit.

Features

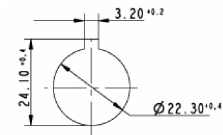
- IP 65 at front
- Drill diameter 22.5 mm
- Installation kit with rotary knob



Installation

- Unscrew and remove the knob
- Screw the unit into the panel
- Plug the potentiometer from behind
- Assembly the knob

Drill Hole



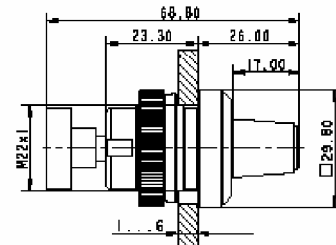
Electrical Connection

Connect the remote potentiometer at the terminals Z1/Z2 (Timer DMC) or at the terminals Z11/Z12 and Z21/Z22 (Timer DVC).

The bridge circuit between terminals Z1-Z2 must be removed and the potentiometer on the front set to maximum.

- Drill Hole \varnothing 22.5mm
- Use a shielded cable, connect one side of the potentiometer at earth (PE) and/or grounded housing
- Max. distance to the timer DMC/DVC: 20 m
- Don't lay cable connections together with high-voltage or high-frequency power lines

Dimensions



Techn. Data

Mounting hole	22.3 mm
Protection	IP65 at front
Elec. resistance	100 kOhm neg. log.
Temperature range	-20 ⁰ - +60 ⁰ C
Mounting	Threaded ring
Max. force	100 N
Weight	ca. 50 g
Installation position	any

Order No.

Order No. 445091 Remote potentiometer DFP 100kOhm incl. installation kit

Safety Precautions



- The installation and operation must be carried out by qualified personnel only,
 - who is familiar with the professional handling of machine equipment,
 - who is familiar with the valid rules of industrial safety and accident prevention,
 - who read and understood the operating instructions.
- The safe function of the device during machine operation cannot be guaranteed in case of wrong connection or improper operation. This may lead to fatal injuries.
- Pay attention to country specific regulations.
- The electrical installation must be performed after disconnecting the device and the machine from the mains supply.
- The wiring must be carried out according to the instructions of this operating manual.
- The person who programs the device must be protected against electrostatic discharge (ESD protection).
- Opening the device, any manipulation of the device and the avoidance of the safety facilities are not permitted.
- All relevant safety regulations and standards must be attended to.
- Non-observance of the safety regulations may cause death, severe injuries or substantial damage to property.
- Before use, please, read the operating instructions and keep it in a safe place. Make sure that the operating instructions are always available for installation, initial operation and maintenance.

Non-observance of the instructions above will cause the loss of warranty.