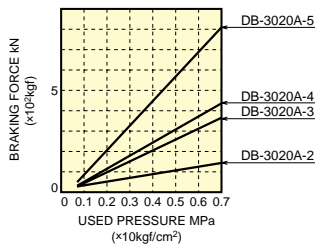


DB-3020A



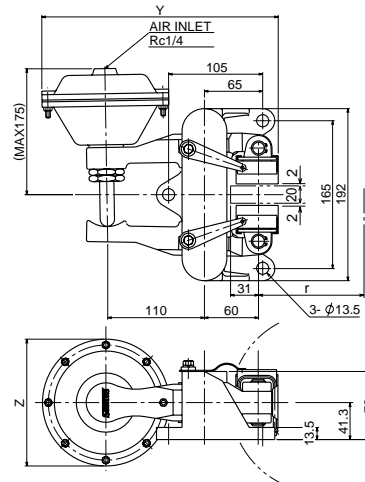
● CHARACTERISTIC CURVE



· COEFFICIENT OF DYNAMIC FRICTION 0.3

● CHAMBER SIZE LIST

MODEL TYPE	3020A-2	3020A-3	3020A-4	3020A-5
CHAMBER SIZE	2"	3"	4"	5"
Y	234	251	263	280
Z ϕ	84	118	141.5	176.5



● SPECIFICATION

· Left side hand is also available.

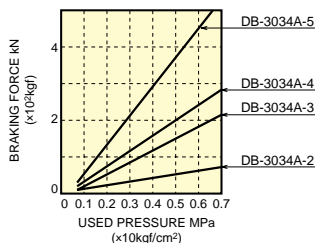
· MODEL TYPE	DB-3020A
· USABLE DISC DIA (mm)	ϕ 200- ∞
· DISC THICKNESS (mm)	20
· EFFECTIVE RADIUS OF BRAKING (m)	$r = \frac{1}{1000} \left(\frac{\text{DISC DIA}}{2} - 31 \right)$
· PAD MODEL TYPE	DB-0433-K※※※
· WEAR ALLOWANCE OF PAD (mm)	7
· MAX.WORKING AIR PRESSURE (MPa)	0.7 (7kgf/cm ²)
· WEIGHT (kg)	8.5
· TORQUE CALCULATION (BRAKING FORCE=kN)	$T \text{ (kN}\cdot\text{m)} = \text{kN} \times r$

High μ pad available.

DB-3034A



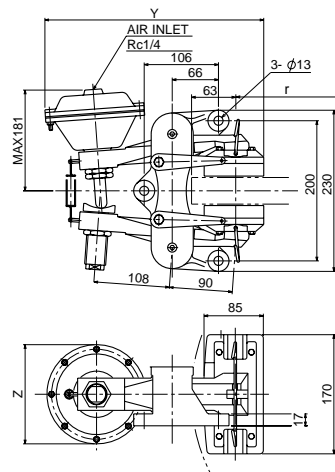
● CHARACTERISTIC CURVE



· COEFFICIENT OF DYNAMIC FRICTION 0.3

● CHAMBER SIZE LIST

MODEL TYPE	3034A-2-01	3034A-3-01	3034A-4-01	3034A-5-01
CHAMBER SIZE	2"	3"	4"	5"
Y	269	297	309	326
Z ϕ	84	118	141.5	176.5



· Left side hand is also available.

● SPECIFICATION

· MODEL TYPE	DB-3034A
· USABLE DISC DIA (mm)	ϕ 500- ∞
· DISC THICKNESS (mm)	38
· EFFECTIVE RADIUS OF BRAKING (m)	$r = \frac{1}{1000} \left(\frac{\text{DISC DIA}}{2} - 63 \right)$
· PAD MODEL TYPE	DB-0435-K※※※
· WEAR ALLOWANCE OF PAD (mm)	15
· MAX.WORKING AIR PRESSURE (MPa)	0.7 (7kgf/cm ²)
· WEIGHT (kg)	14
· TORQUE CALCULATION (BRAKING FORCE=kN)	$T \text{ (kN}\cdot\text{m)} = \text{kN} \times r$

High μ pad available.

· Dimensions and specifications might be changed for improvement without notice.